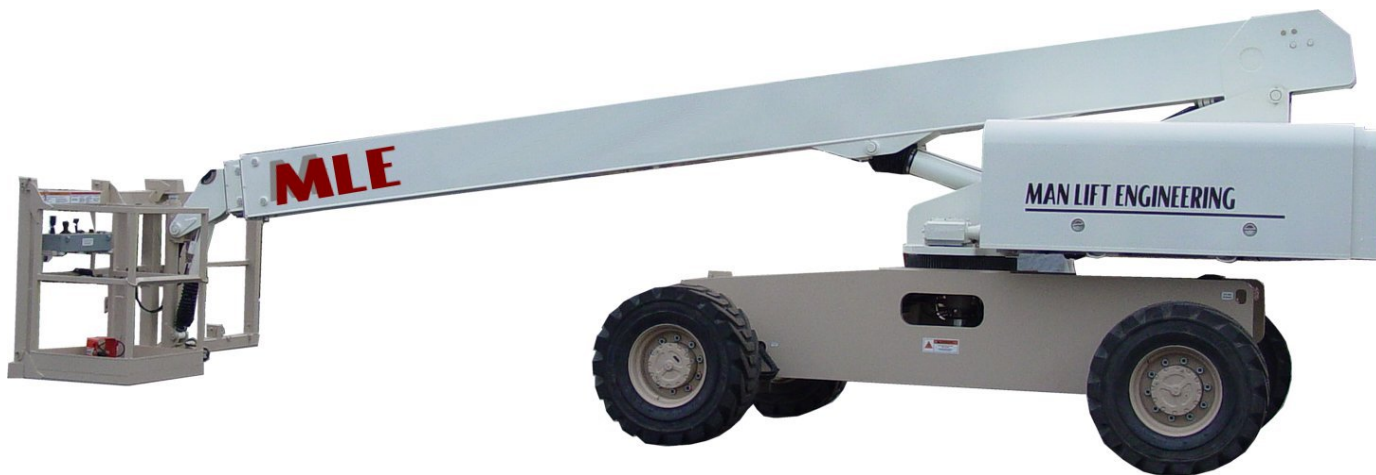


# Quad Lifter Series



## T80MH-2500

*Man Lift – Forklift – Winch Lift – Material Lift*

---

### Standard Features

- 4 Wheel Hydrostatic Drive
- Platform Height 80'
- Working Height 86'
- Platform Capacity 2500#
- Platform Size 96 x 36"
- Oscillating Axle
- Precise Proportional Controls
- Platform Load Sensing System
- Load, Position and Error Display at Platform With Self-Diagnostics
- Emergency Lowering System
- Ford 82 HP Gas Engine

### Optional Equipment:

- Platform “modules” that simply attach to boom for specific jobs such as:
  - => Piping
  - => Material Handling
  - => Welding
- Outriggers for operation on slopes
- Generator Package
- Welder Package
- Air compressor
- Foam Filled Tires
- Oxy-Acetylene to Platform
- Horn
- Platform Work Lights
- Diesel Power
- Air Line To Platform

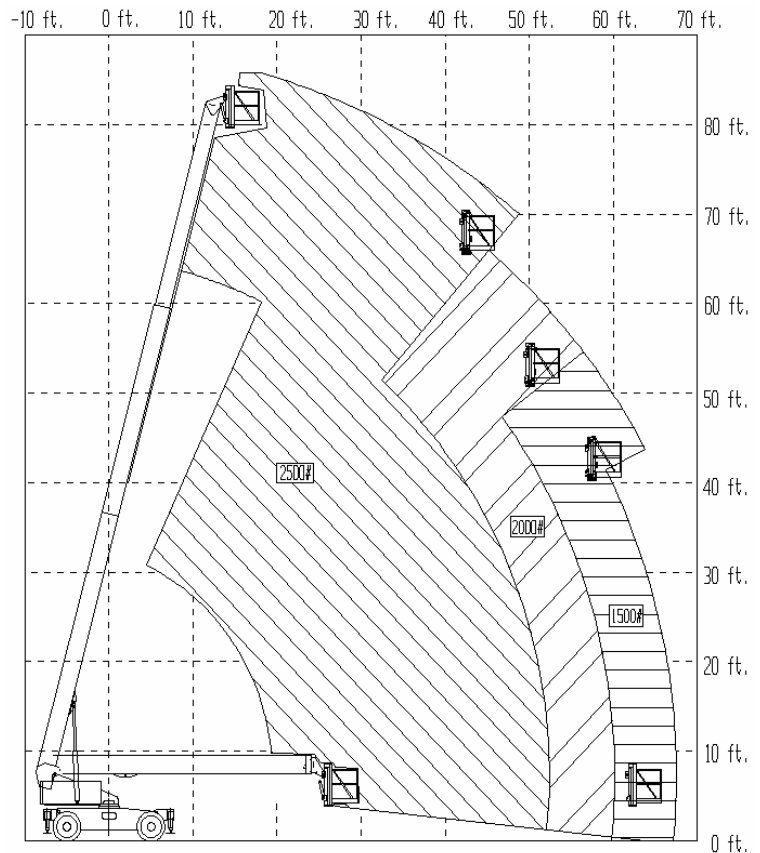
***MAN & MATERIAL LIFT ENGINEERING***

## Specifications

Specifications subject to change without prior notice

T80MH-2500	US	Metric
Working Height	86 feet	26.2m
Platform Height	80 feet	24.4m
Platform Capacity	2500 lbs	1134kg
Platform Size	96 X 36 in	2.4 X .9m
Stowed Height	9 ft 6 in	2.9m
Stowed Length	37 ft 6in	11.4m
Horizontal Reach	60 ft	18.3m
Overall Width (Drive Mode)	8 ft 6 in	2.6m
Overall Width (Lift Mode)	14 ft	4.3m
Tail Swing	3 ft 11 in	1.2m
Outside Turning Radius	19 ft 8 in	6.0m
Inside Turning Radius	8 ft 1 in	2.5m
Ground Clearance	10.5 in	.3m
Turret Rotation Cont	360°	360°
Platform Rotation	100°	100°
Engine Power	80hp	80hp
Hydraulic Tank Capacity	45 gal	170.3L
Fuel Tank Capacity	35 gal	132.5L
Wheel Base	10 ft	3.0m
Gross Weight	41,500 lbs	18,824.4kg
Travel Speed	3.5 MPH	3.5MPH
Gradeability (4WD)	45%	45%

## Load Range Diagram



## Special Features

**Converts in Seconds** – No tools are necessary to convert the Quad Lifter to one of the different lifting configurations.

**Reduced Down Time** – Quad Lifter does the work of 4 machines, reducing time on the job site by 1/3. One machine can lift man and material.

**Lower Transport Costs** – Ship one Quad Lifter on one truck. Quad Lifter and its attachments are light enough to fit on one truck as a legal load.

## **MAN & MATERIAL LIFT ENGINEERING**

5707 South Pennsylvania Avenue

Cudahy, WI 53110

Phone: 414-486-1760

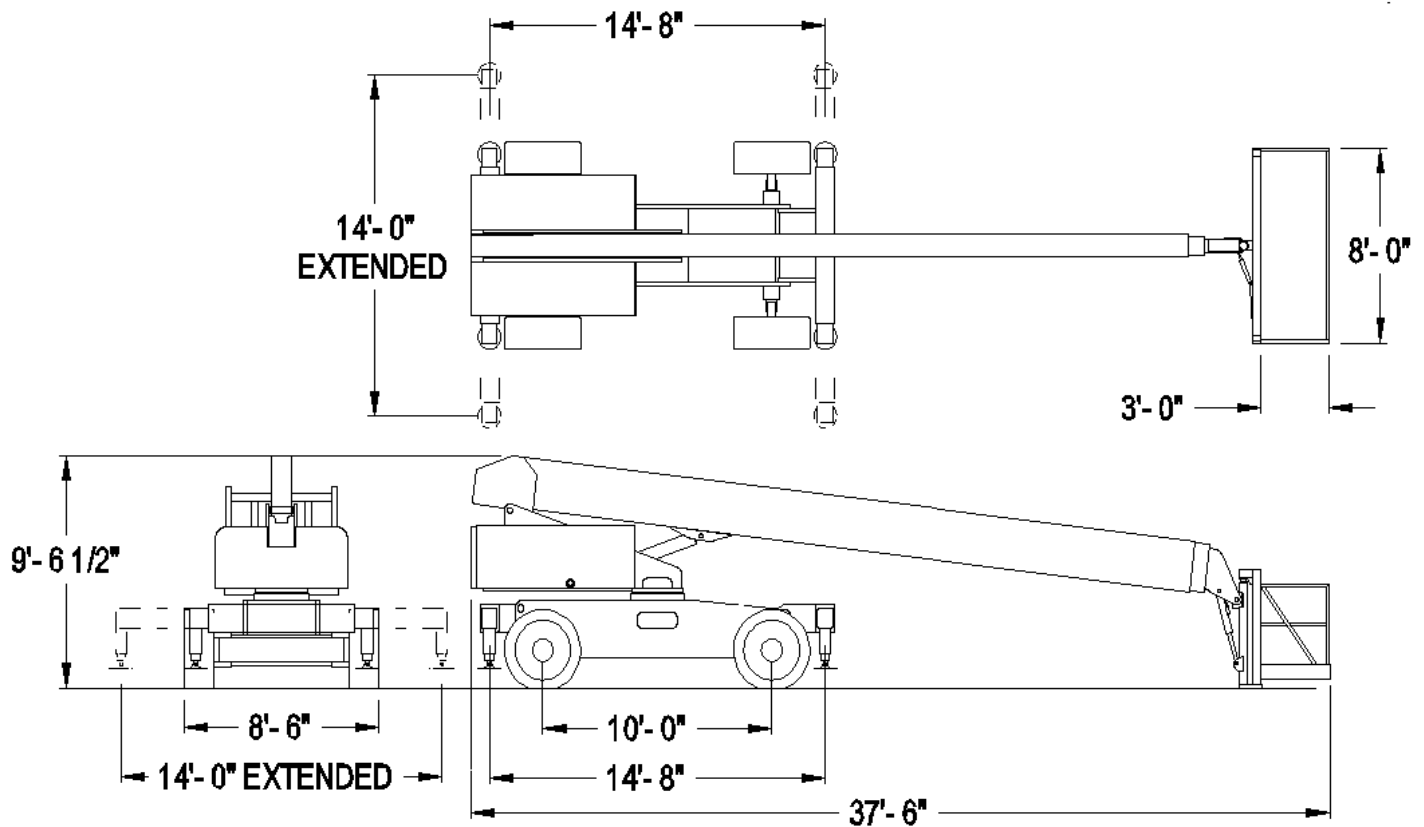
Fax: 414-486-1763

[www.manliftengineering.com](http://www.manliftengineering.com)

[sales@manliftengineering.com](mailto:sales@manliftengineering.com)

# Quad Lifter T80MH-2500

## T80MH-2500 With Outriggers



US patents:

- Load Sensing Mechanism #US 7,004,285B2
- Pallet System #US 7,118,314B2
- Material Handling Device #US 7,182,173B2

### **MAN & MATERIAL LIFT ENGINEERING**

5707 South Pennsylvania Avenue

Cudahy, WI 53110

Phone: 414-486-1760

Fax: 414-486-1763

[www.manliftengineering.com](http://www.manliftengineering.com)  
[sales@manliftengineering.com](mailto:sales@manliftengineering.com)