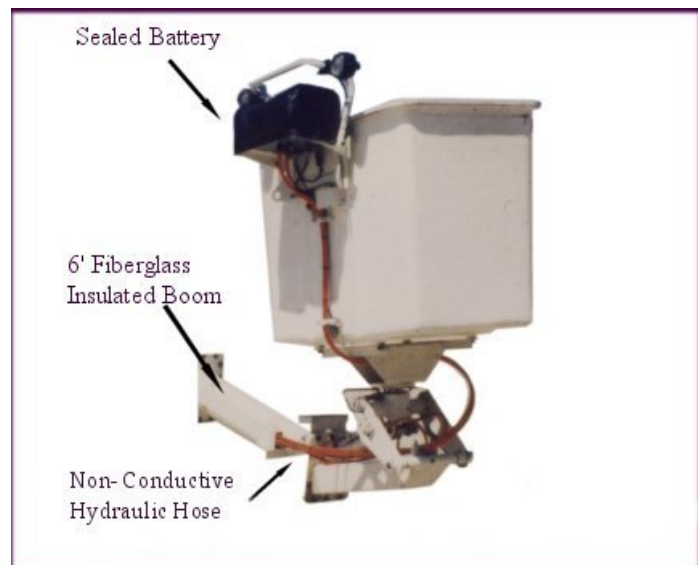


T35NI

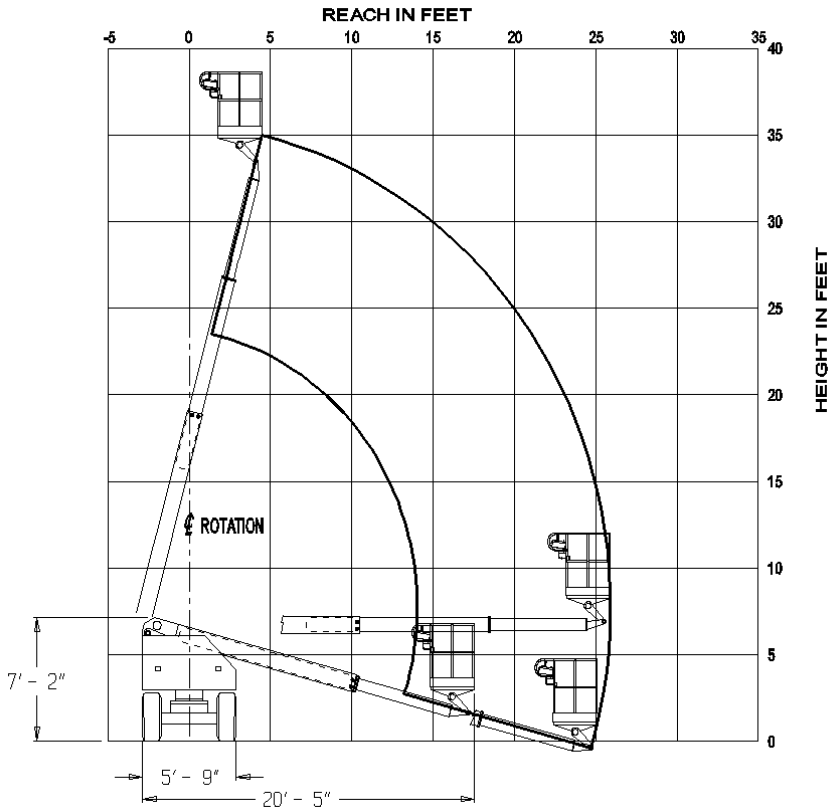


Standard Equipment:

- Narrow Width to fit in Tight Areas
- Zero Tail Swing
- More Compact than an Articulating Boom
- Diesel Power
- Smooth Hydrostatic Drive
- 650 Pound Capacity
- Non-Conductive Hydraulic Hoses
- 6-foot Fiberglass Insulated Boom
- Sealed Battery



Load Range Diagram



Specifications

	T35NI	
Specifications	US	Metric
Working Height	41 ft	12.5 m
Platform Height	35 ft	10.7 m
Platform Capacity	650 lbs	294.8 kg
		61 x 122
Platform Size	24 x 48 in	cm
Stowed Height	6 ft 11 in	2.11 m
Stowed Length	20 ft 5 in	6.2 m
Horizontal Reach	26 ft	7.9 m
Overall Width	6 ft 9 in	1.75 m
Tail Swing	Zero	Zero
Outside Turning Radius	14 ft 6 in	4.4 m
Inside Turning Radius	7 ft 4 in	2.2 m
Ground Clearance	5-1/2 in	14 cm
Tire Size	240/55D-17.5	240/55D-17.5
Turret Rotation	360° Non-Continuous	360° Non-Continuous
Platform Rotation	180°	180°
Power Source	Deutz	Deutz
Hydraulic Tank Capacity	F1011	F1011
	Diesel	Diesel
Hydraulic Tank Capacity	35 gal	133 L
Fuel Tank Capacity	36 gal	136 L
Wheel Base	72 in	1.8 m
Gross Weight (est)	17,500 lbs	7,960 kg
Travel Speed	6 MPH	
Gradeability 2WD	25%	25%
Specifications Subject to Change without		

MLE
MAN & MATERIAL LIFT ENGINEERING

2129 E. Birchwood Avenue
Cudahy, WI 53110

Phone: 414-486-1760

Fax: 414-486-1763

www.manliftengineering.com

sales@manliftengineering.com