

D Y S e r i e s

Class I, Division 2, Hazardous Environment

T86JDY



Factory Mutual Certified

T86JDY		
Specifications	US	Metric
Platform Height	86 ft	26.21 m
Platform Capacity	500 lbs	227 kg
Platform Size	36 x 96 in	.91 x 2.44 m
Stowed Height	10 ft	3.05 m
Stowed Length	40 ft	12.19 m
Horizontal Reach	75 ft	22.86 m
Overall Width	8 ft 2 in	2.49 m
Outside Turning Radius 2WS/4WS	22 ft 6 in	6.86 m
Inside Turning Radius 2WS/4WS	12 ft	3.66 m
Ground Clearance	12 in	30 cm
Tail Swing	4 ft 8 in	1.42 m
Platform Rotation	180° Hydraulic	
Travel Speed	0.5 mph/2.5 mph	0.8 kph/4 kph
Wheel Base	10 ft	3.05 m
Gross Weight (est)	36,400 lb	16,511 kg
Gradeability 4WD	45%	45%
Fuel Tank Capacity	31 gal	117.3 L
Hydraulic Reservoir	48 gal	181.7 L
Power Source	Diesel	Diesel
Diesel Engine	Caterpillar 3044C 63.3 hp (47.2 kW)	
<i>Specifications Subject to Change Without Prior Notice</i>		

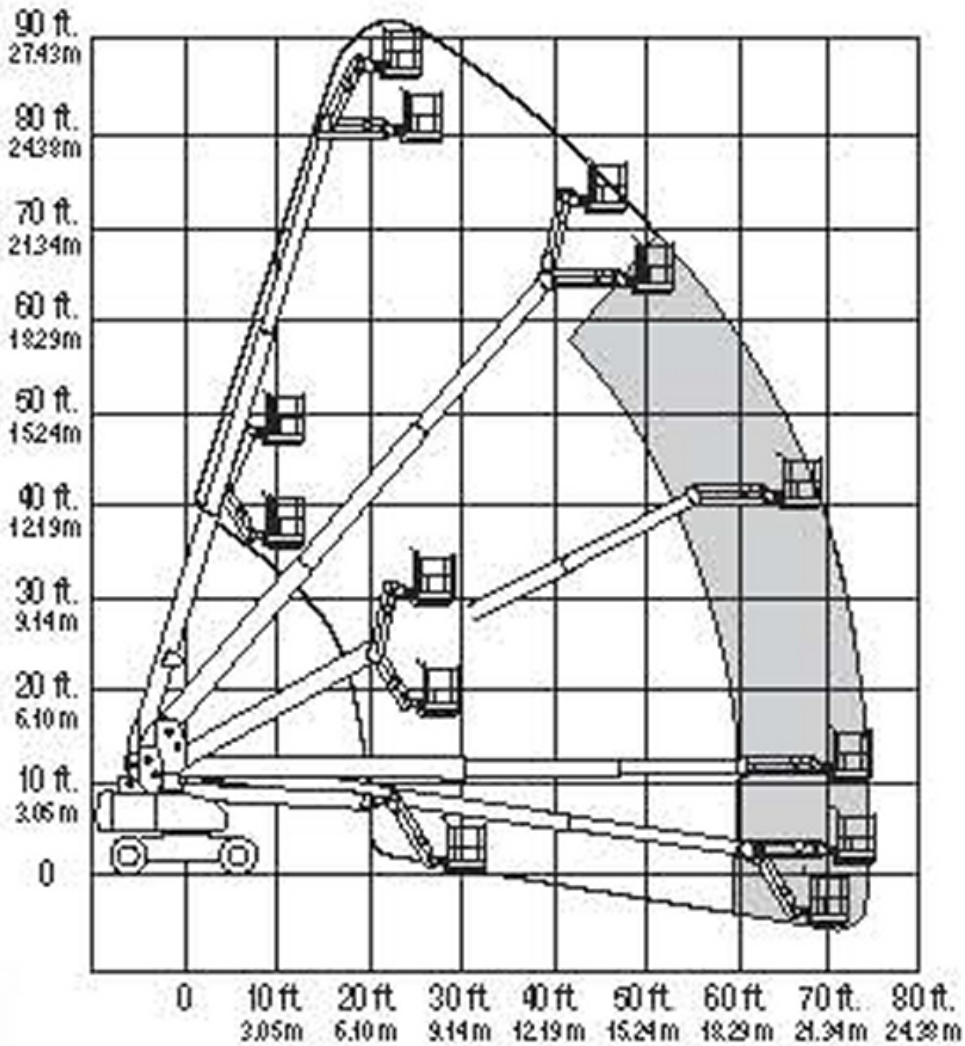
STANDARD EQUIPMENT:

- 86' Platform Height
- 92' Working Height
- Horizontal Outreach 75'
- Platform Size 36" x 96"
- Overall Width 8' 2"
- Stowed Height 10'
- Stowed Length 40'
- Ground Clearance 12"
- Proportional Hydraulic Controls



5707 S. Pennsylvania Avenue
 Cudahy, WI 53110
 Phone: 414-486-1760
 Fax: 414-486-1763
www.manliftengineering.com
sales@manliftengineering.com

T86JDY RANGE DIAGRAM



MLE
MAN & MATERIAL LIFT ENGINEERING

5707 S. Pennsylvania Avenue
Cudahy, WI 53110
Phone: 414-486-1760
Fax: 414-486-1763
www.manliftengineering.com
sales@manliftengineering.com