

# D Y S e r i e s

## Class I, Division 2, Hazardous Environment

### T80DY



Factory Mutual Certified

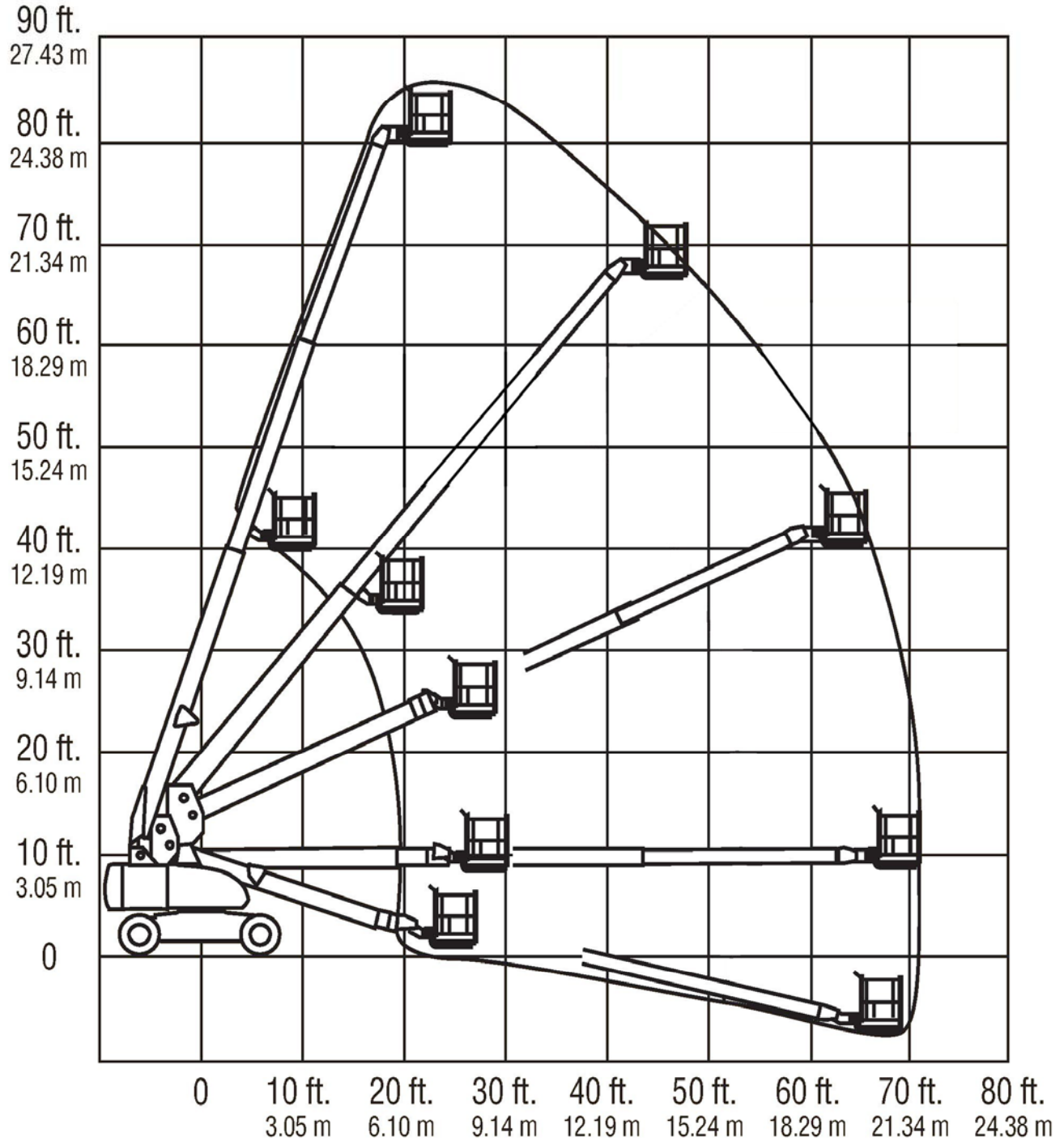
T80DY		
Specifications	US	Metric
Platform Height	80 ft	24.38 m
Platform Capacity	500 lbs	227 kg
Platform Size	36 x 96 in	.91 x 2.44 m
Stowed Height	9 ft 11 in	3.02 m
Stowed Length	37 ft 3 in	11.35 m
Horizontal Reach	71 ft	21.64 m
Overall Width	8 ft 2 in	2.49 m
Outside Turning Radius 2WS/4WS	22 ft 6 in	6.86 m
Inside Turning Radius 2WS/4WS	12 ft	3.66 m
Ground Clearance	12 in	30 cm
Tail Swing	4 ft 8 in	1.42 m
Platform Rotation	180° Hydraulic	
Travel Speed	0.5 mph/2.5 mph	0.8 kph/4 kph
Wheel Base	10 ft	3.05 m
Gross Weight (est)	33,200 lb	15,059 kg
Gradeability 4WD	45%	45%
Fuel Tank Capacity	31 gal	117.3 L
Hydraulic Reservoir	48 gal	181.7 L
Power Source	Diesel	Diesel
Diesel Engine	Caterpillar 3044C 63.3 hp (47.2 kW)	
<i>Specifications Subject to Change Without Prior Notice</i>		

### STANDARD EQUIPMENT:

- 80' Platform Height
- 86' Working Height
- Horizontal Outreach 71'
- Platform Size 36" x 96"
- Overall Width 8' 2"
- Stowed Height 9' 11"
- Stowed Length 37' 3"
- Ground Clearance 12"
- Proportional Hydraulic Controls

**MLE**  
 MAN & MATERIAL LIFT ENGINEERING  
 5707 S. Pennsylvania Avenue  
 Cudahy, WI 53110  
 Phone: 414-486-1760  
 Fax: 414-486-1763  
[www.manliftengineering.com](http://www.manliftengineering.com)  
[sales@manliftengineering.com](mailto:sales@manliftengineering.com)

# T80DY Range Diagram



**MLE**  
MAN & MATERIAL LIFT ENGINEERING  
5707 S. Pennsylvania Avenue  
Cudahy, WI 53110  
Phone: 414-486-1760  
Fax: 414-486-1763  
[www.manliftengineering.com](http://www.manliftengineering.com)  
[sales@manliftengineering.com](mailto:sales@manliftengineering.com)