

# D Y S e r i e s

## Class I, Division 2, Hazardous Environment

### T60DY/T60JDY



Factory Mutual Certified

T60DY/T60JDY		
Specifications	US	Metric
Platform Height	60 ft 5 in	18.44 m
Platform Capacity	500 lbs	227 kg
Platform Size	36 x 96 in	.91 x 2.44 m
Stowed Height	8 ft 5 in	2.57 m
Stowed Length <b>T60JDY</b>	31 ft	9.45 m
Stowed Length <b>T60DY</b>	27 ft 11 in	8.51 m
Horizontal Reach <b>T60JDY</b>	50 ft 5 in	15.36 m
Horizontal Reach <b>T60DY</b>	49 ft 6 in	15.09 m
Overall Width	7 ft 11 in	2.42 m
Outside Turning Radius 2WS/4WS	17 ft 9 in/11 ft 4 in	5.41 m/3.45 m
Inside Turning Radius 2WS/4WS	11 ft 4 in/5 ft 5 in	3.45 m/1.65 m
Ground Clearance	12 in	30 cm
Tail Swing	3 ft 9 in	1.14 m
Platform Rotation	180° Hydraulic	
Jib Range of Articulation <b>T60JDY</b>	6 ft/132°	1.83 m (+71, -61)
Diesel Engine	Caterpillar 3044C 63.3 hp (47.2 kW)	
Travel Speed	0.5 mph/2.5 mph	0.8 kph/4 kph
Wheel Base	8 ft 1 in	2.46 m
Gross Weight <b>T60JDY</b>	26,300 lb	11,929 kg
Gross Weight <b>T60DY</b>	25,100 lb	11,385 kg
Gradeability 4WD	25%	25%
Fuel Tank Capacity	40 gal	151.4 L
Hydraulic Reservoir	32 gal	121.1 L
Power Source	Diesel	Diesel

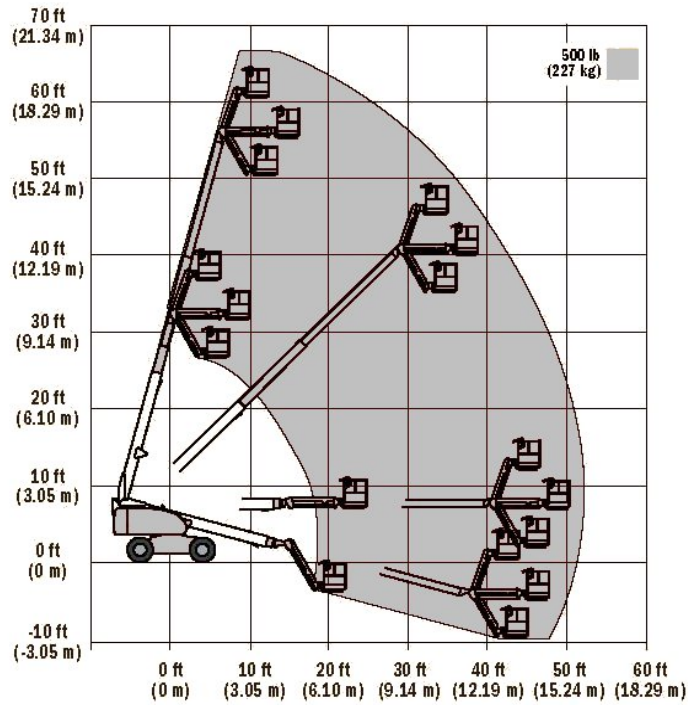
Specifications Subject to Change Without Prior Notice

### STANDARD EQUIPMENT:

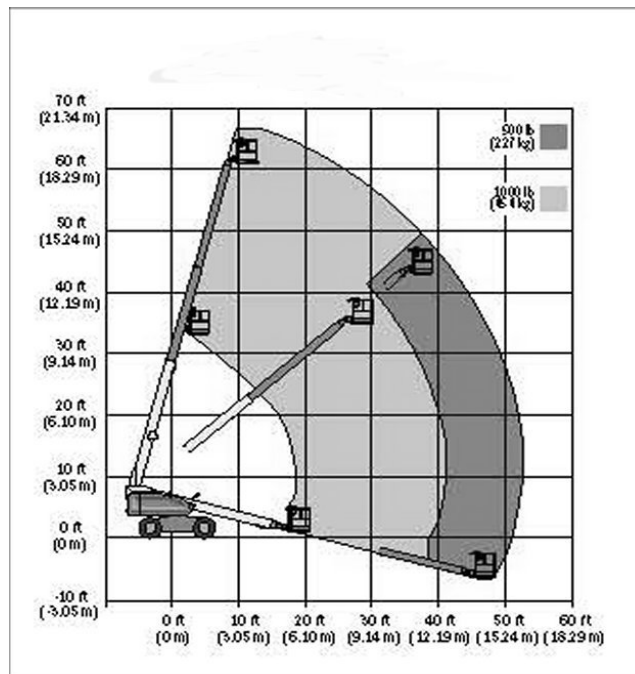
- 60' Platform Height
- 66' Working Height
- Horizontal Outreach 50' (T60JDY)
- Horizontal Outreach 49' 6" (T60JDY)
- Platform Size 36" x 96"
- Overall Width 7' 11"
- Stowed Height 8' 5"
- Stowed Length 31' (T60JDY)
- Stowed Length 49' 6" (T60DY)
- Ground Clearance 12"
- Proportional Hydraulic Controls
- Spark Arrest Muffler

**MLE**  
 MAN & MATERIAL LIFT ENGINEERING  
 5707 S. Pennsylvania Avenue  
 Cudahy, WI 53110  
 Phone: 414-486-1760  
 Fax: 414-486-1763  
[www.manliftengineering.com](http://www.manliftengineering.com)  
[sales@manliftengineering.com](mailto:sales@manliftengineering.com)

## T60JDY Range Diagram



## T60DY Range Diagram



**MLE**  
MAN & MATERIAL LIFT ENGINEERING  
5707 S. Pennsylvania Avenue  
Cudahy, WI 53110  
Phone: 414-486-1760  
Fax: 414-486-1763  
[www.manliftengineering.com](http://www.manliftengineering.com)  
[sales@manliftengineering.com](mailto:sales@manliftengineering.com)