

D Y S e r i e s

Class I, Division 2, Hazardous Environment

T46JDY



Factory Mutual Certified

| T46JDY | | |
|---------------------------|-----------------------------------|-----------------|
| Specifications | US | Metric |
| Platform Height | 46 ft | 14.02 m |
| Platform Capacity | 500 lb | 227 kg |
| Platform Size | 36 x 96 in | .91 x 2.44 m |
| Stowed Height | 7 ft 10 in | 2.39 m |
| Stowed Length | 29 ft | 8.84 m |
| Horizontal Reach | 40 ft 6 in | 12.34 m |
| Overall Width | 7 ft 6.5 in | 2.3 m |
| Tail Swing | 2 ft 10 in | 86 cm |
| Outside Turning Radius | 16 ft 5 in | 5.0 m |
| Inside Turning Radius | 6 ft 7 in | 2.0 m |
| Ground Clearance | 12.5 in | 32 cm |
| Platform Rotation | 180° Hydraulic | |
| Jib Range of Articulation | 6 ft, 130° | 1.83, (+70,-60) |
| Diesel Engine | Caterpillar 3024C 50 hp (37.2 kW) | |
| Travel Speed | 0.5 mph/2.5 mph | 0.8 kph/4 kph |
| Wheel Base | 7 ft 8 in | 2.34 m |
| Gross Weight (est) | 15,855 lbs | 7,192 kg |
| Gradeability 4WD | 25% | 25% |
| Power Source | Diesel | Diesel |
| Fuel Tank Capacity | 26 Gal | 98.5 L |
| Hydraulic Reservoir | 42 Gal | 159 L |

Specifications Subject to Change Without Prior Notice

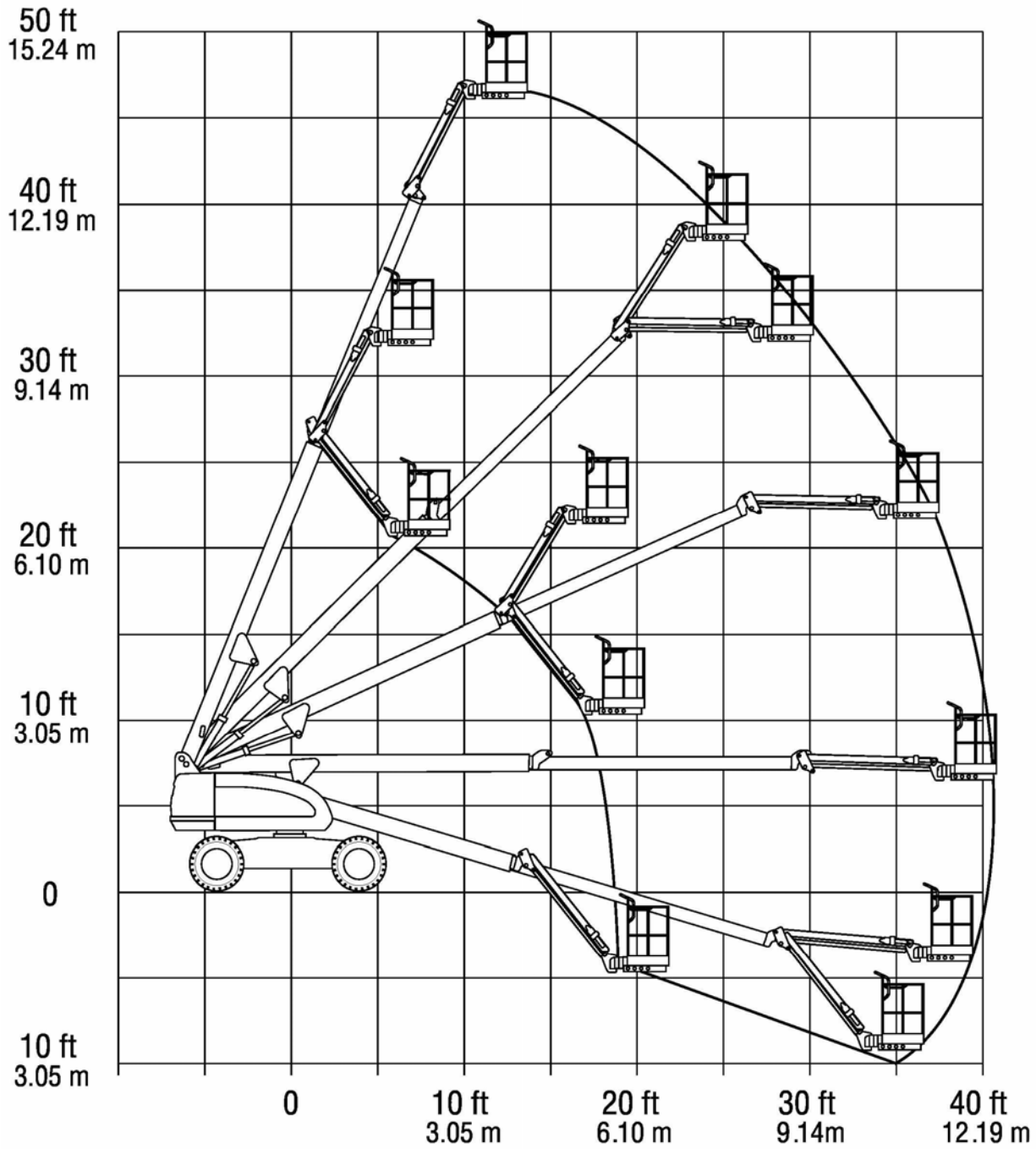
STANDARD EQUIPMENT:

- 46 ft Platform Height
- 52 ft Working Height
- Horizontal Outreach 40 ft 6 in
- Platform Size 36 x 96 in
- Overall Width 7 ft 6.5 in
- Stowed Height 7 ft 10 in
- Stowed Length 29 ft
- Ground Clearance 12.5 in
- Proportional Hydraulic Controls
- Spark Arrest Muffler

MLE
MAN & MATERIAL LIFT ENGINEERING

5707 S. Pennsylvania Avenue
Cudahy, WI 53110
Phone: 414-486-1760
Fax: 414-486-1763
www.manliftengineering.com
sales@manliftengineering.com

T46JDY RANGE DIAGRAM



MLE
MAN & MATERIAL LIFT ENGINEERING
5707 S. Pennsylvania Avenue
Cudahy, WI 53110
Phone: 414-486-1760
Fax: 414-486-1763
www.manliftengineering.com
sales@manliftengineering.com