

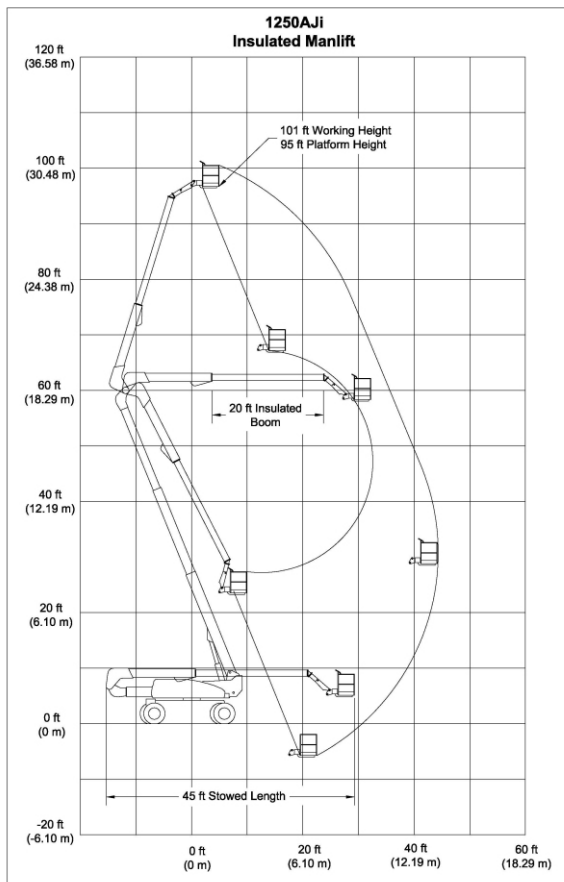
# I n s u l a t e d L i f t



## 1250Aji



**230,345,500KV INSULATION OPTION AVAILABLE**



Specifications	US	Metric
Working Height	101 ft	30.7 m
Platform Height	95 ft	28.9 m
Platform Capacity	500 lbs	227kg
Platform Size	24" x 48"	.61 x 1.22m
Stowed Height	10'	3.05 m
Horizontal Reach	45'	13.7 m
Stowed Length	45'	13.7 m
Overall Width Axles Retracted	8' 2"	2.49m
Overall Width Axles Extended	12' 6"	3.81m
Tail Swing	3'	91cm
Ground Clearance	12"	30cm
Turret Rotation	360° Continuous	
Platform Rotation	180°	
Power Source	Deutz Diesel	
Hydraulic Tank Capacity	53 gal	200.63L
Fuel Tank Capacity	31 gal	117.35L
Wheel Base	12' 6"	3.81m
Gross Weight (est)	44,000 lbs	19,958kg
Travel Speed	3.25 MPH	
Gradeability 2/4WD	30/45%	

*Specifications Subject to Change without Prior Notice*

### Standard Equipment:

- Proportional Controls
- Hydrostatic Drive
- 2/4 Wheel Drive Option
- Dual Fuel/Diesel Engine Option
- ANSI Category C 230kV insulating Package
- 20' Fiberglass Boom & Bucket
  - Options:
  - Bucket Liner
  - Bucker Cover

**MLE**  
MAN & MATERIAL LIFT ENGINEERING  
5707 S. Pennsylvania Avenue  
Cudahy, WI 53110  
Phone: 414-486-1760  
Fax: 414-486-1763  
www.manliftengineering.com  
sales@manliftengineering.com