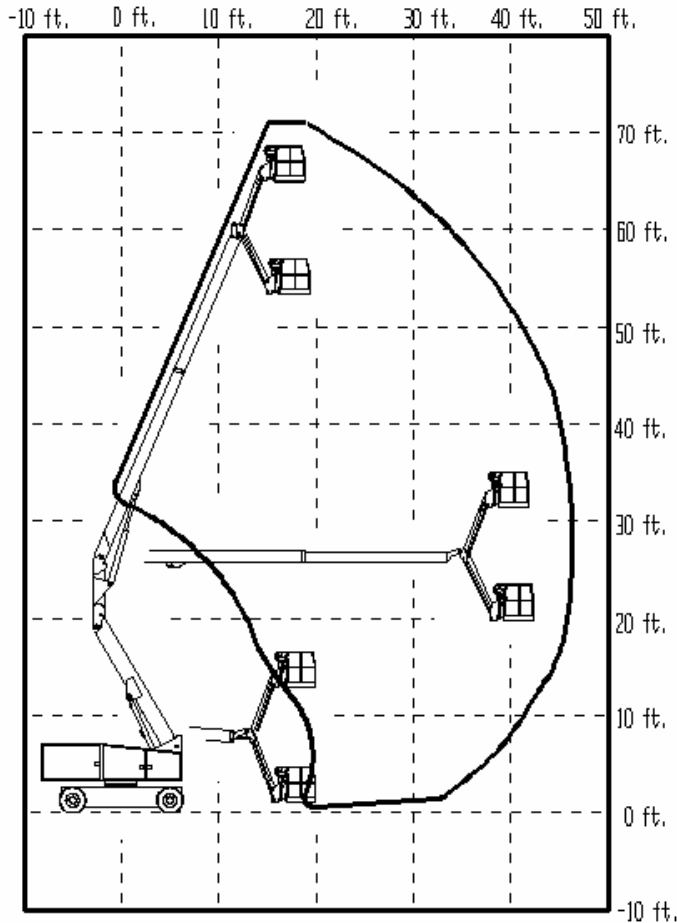


A65CR

- Aerospace Clean Room Designed Machine
- Extra-Stiff In Line Booms
- Precise Electro-Hydraulics Closed-Loop Drive System
- Complete Drip Protection
- Large 650 Amp-Hour 48V Batteries
- 128Amp Battery Charger
- 4 Wheel Steering





A65CR		
Specifications	US	Metric
Working Height	71 ft	21.6 m
Platform Height	65 ft	19.8 m
Platform Capacity	500 lbs	227 kg
Platform Size	60 x 36 in	1.5 x .91 m
Stowed Height	8 ft 10 in	2.7 m
Stowed Length	29 ft 11 in	9.1 m
Horizontal Reach	47 ft	14.3 m
Overall Width	7 ft 11 in	2.4 m
Tail Swing	4 ft 2 in	1.2 m
Inside Turning Radius	8 ft	2.4 m
Ground Clearance	7 in	.18 m
Turret Rotation	360°	360°
Platform Rotation	180°	180°
Power Source	48V	48V
Wheel Base	10 ft	3.0 m
Gross Weight (est)	24,000 lbs	10886 kg
Travel Speed	2 mph	2 mph
Gradeability	20%	20%

Specifications Subject to Change Without Prior Notice



MLE

MAN & MATERIAL LIFT ENGINEERING
 5707 S. Pennsylvania Avenue
 Cudahy, WI 53110
 Phone: 414-486-1760
 Fax: 414-486-1763
www.manliftengineering.com
sales@manliftengineering.com