

# BATTERY POWERED LIFT

## 1250AJPE



### Standard Equipment:

- 125 ft 4 in (38.1 m) Platform Height
- Platform Size 36 x 96 in (.91x2.44 m)
- Lifting Capacity 500 lbs (227 kg)
- On Board 8000 Watt Generator
- (2) - 48 Volt DC Electric Motor
- 1000 Amp hr Battery
- On-Board Battery Charger
- 8ft Jib (2.44 m) Boom
- Fully Proportional Controls
- 360 Continuous Turntable Rotation
- Hose Reel For Charging Cable
- Tire Socks

### 1250AJPE

#### Reach Specifications

Platform Height	125 ft (38.1 m)
Horizontal Reach	83 ft 2 in. (19.25 m)
Up and Over Height	60 ft 6 in. (18.44 m)
Swing	360° Continuous
Platform Capacity—Restricted	1,000 lb (454 kg)
Platform Capacity—Unrestricted	500 lb (227 kg)
Platform Rotator	180°
JibPLUS®	
Length	8 ft (2.44 m)
Horizontal Motion†	125°
Vertical Motion	130° (+75/-55)

#### Dimensional Data

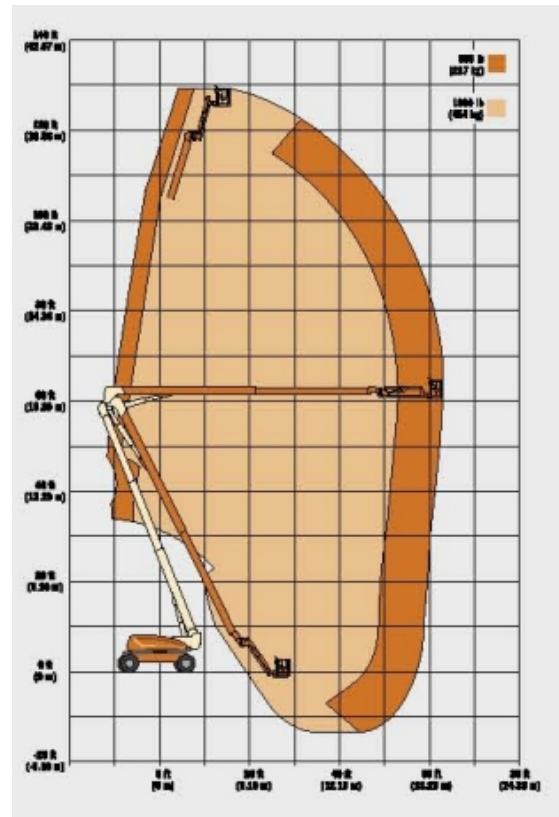
A. Platform Size	36 x 96 in. (0.91 x 2.44 m)	
B. Overall Width	Axles Retracted	8 ft 2 in. (2.49 m)
	Overall Width	12 ft 6 in. (3.81 m)
C. Tailswing	3 ft (91 cm)	
D. Stowed Height	10 ft (3.05 m)	
E. Stowed Length	37 ft 7 in. (11.45 m)	
F. Wheel Base	12 ft 6 in. (3.81 m)	
Ground Clearance	Axle	12 in. (30 cm)
	Chassis	25.5 in. (65 cm)
Weight	44,000 lb (19,958 kg)	

#### Chassis

Max Ground Bearing Pressure*	100 psi (7.03 kg/cm <sup>2</sup> )	
Drive Speed	3.25 mph (5.2 mph)	
Gradeability	45%	
Turning Radius (Inside)	Axles Retracted	14 ft 5 in. (4.39 m)
	Axles Extended	8 ft (2.44 m)
Turning Radius (Outside)	Axles Retracted	22 ft 6 in. (6.86 m)
	Axles Extended	19 ft 4 in. (5.89 m)
Crab Steer Ratio <sup>3</sup>	1:1	
Axle Oscillation	12 in. (30 cm)	
Tires/Type	445/500 710 Foam Filled	

#### Power Source

1000 Amp-Hr Battery
AC/DC Power
Dual Hydrostatic Pumps
(2) 48v DC Motors



**MLE**  
MAN & MATERIAL LIFT ENGINEERING

5707 S. Pennsylvania Avenue  
Cudahy, WI 53110  
Phone: 414-486-1760  
Fax: 414-486-1763  
[www.manliftengineering.com](http://www.manliftengineering.com)  
[sales@manliftengineering.com](mailto:sales@manliftengineering.com)