

# TZ50i

## 50' Trailer Mounted Electrically Insulated Lift

### FEATURES

- Fiberglass Platform 24 x 24 in
  - Sealed Battery
  - 6ft Fiberglass Boom
  - Non-Conductive Hydraulic Hoses
  - Radio remote Control
  - 46KVA Insulation
  - 160° platform rotation
- POWER OPTIONS**
- 24V DC power source

- Hybrid Honda 5.5 Hp (4.1 Kw) 45 amp charging system

### DRIVE

- Drive and set option (ANSI, CSA)

### COUPLER OPTIONS

Combination hitch

- 2 in (5.08 cm) ball coupler
- 2.31 in (5.87 cm) ball coupler
- 2.5 in (6.53 cm) ID. pintle ring coupler
- Clevis coupler

### TIRE OPTIONS

- ST 225/75 R15 tires (ANSI, CSA)

### STANDARD FEATURES

#### MEASUREMENTS

- 55 ft 6 in (17.09 m) working height
- 29 ft 2 in (8.89 m) horizontal reach
- Up to 300 lb lift capacity

#### PRODUCTIVITY

- Industry leading working envelope
- Extension boom
- Self-leveling platform
- Hydraulic platform rotation

- AC wiring to platform
- Hydraulic outriggers
- Automatic 110 leveling system
- Outrigger interlocks
- Mechanical parking brake
- Hydraulic surge brakes
- Auxiliary pump down
- Combination hitch with coupler lever lock
- Dual jockey wheels
- 359° non-continuous turntable rotation
- Easy to access batteries
- Hour meter
- Tilt alarm / sensor
- Illuminated outrigger indicators

#### POWER

- 24V DC power source

### Made For .....

- Electrical Contractors
- Plant Maintenance
- Electrical Utilities



- 46KV ANSI Class C Rating
- 6' Fixed Fiberglass Jib
- Radio Remote Control
- Non-Conductive Hyd Hoses

**MLE**  
MAN & MATERIAL LIFT ENGINEERING

5707 S. Pennsylvania Avenue  
Cudahy, WI 53110

Phone: 414-486-1760

Fax: 414-486-1763

[www.manliftengineering.com](http://www.manliftengineering.com)  
[sales@manliftengineering.com](mailto:sales@manliftengineering.com)

## SPECIFICATIONS TZ50i

MEASUREMENTS	US	Metric
Working height*		
Platform height	49ft 6 in	15.09 m
Entry height	1 ft 8 in	.51 m
Horizontal reach	29 ft 2 in	8.8g m
Clear outreach	23 ft 1 in	7.04 m
Up and over clearance	22 ft	6.71 m
(A) Platform length	2 ft 2.8 in	.68 m
(B) Platform width	3 ft 8 in	112 m
(C) Height - stowed	6ft 10 in	2 m
(D) Length - stowed	23ft 6 in	7.16 m
(E) Width - stowed	5 ft 6 in	1.68 m
(F) Ground clearance - center	10 in	.25 m
(G) Length - outrigger footprint	14ft 4 in	4.37 m
(H) Width - outrigger footprint	14ft 4 in	4.37 m

### PRODUCTIVITY

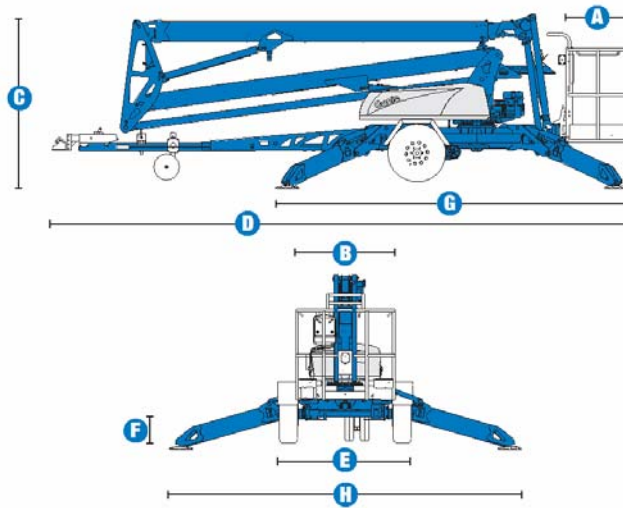
Lift capacity (ANSI, GSA) - standard	300 lbs	
Lift capacity (ANSI, GSA) - rotating platform		
Jib boom	n/a	
Jib working range	n/a	
Self leveling platform	2.5° standard	
Platform rotation option	160° hydraulic	
AC power to platform	standard	
Turntable rotation	359° non-continuous	
Outrigger leveling capability	10°	
Drive speed	0.85 mph	1.37 km/h
Gradeability**	20%	
Towing speed rate	60 mph	97 km/h
Tongue weight - ANSI,	400 lbs	181 kg
Surge and parking brakes	standard	
Controls	variable speed system	
Tires - ANSI, Tires	ST 225/75 R15 215	
Coupler	2 in (5.08 cm) hitch coupler standard	
Power source - standard	24V DC (four 6V 225 Ah batteries)	

### POWER

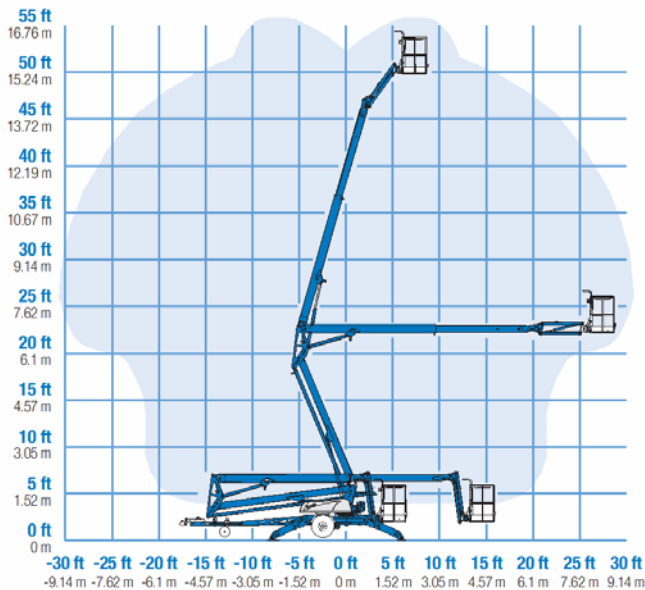
Power source - drive option	24V DC (four 6V 24Ah batteries)	
Power source - option	Hybrid DC/Gas Honda 5.5 hp (4.1 kW)	
Fuel tank capacity	.95 gal	3.6 L
Hydraulic tank capacity	4.75 gal	18 L
Hydraulic system capacity	8.0 gal	30 L

### WEIGHT

	4,400 lbs	1,996 kg
--	-----------	----------



### RANGE OF MOTION TZ™-50



**MLE**  
 MAN & MATERIAL LIFT ENGINEERING  
 5707 S. Pennsylvania Avenue  
 Cudahy, WI 53110  
 Phone: 414-486-1760  
 Fax: 414-486-1763  
[www.manliftengineering.com](http://www.manliftengineering.com)